

Waivers and Supports Coordination

Alexandra “Sascha” Baello

Director of Adult and Recreation Services

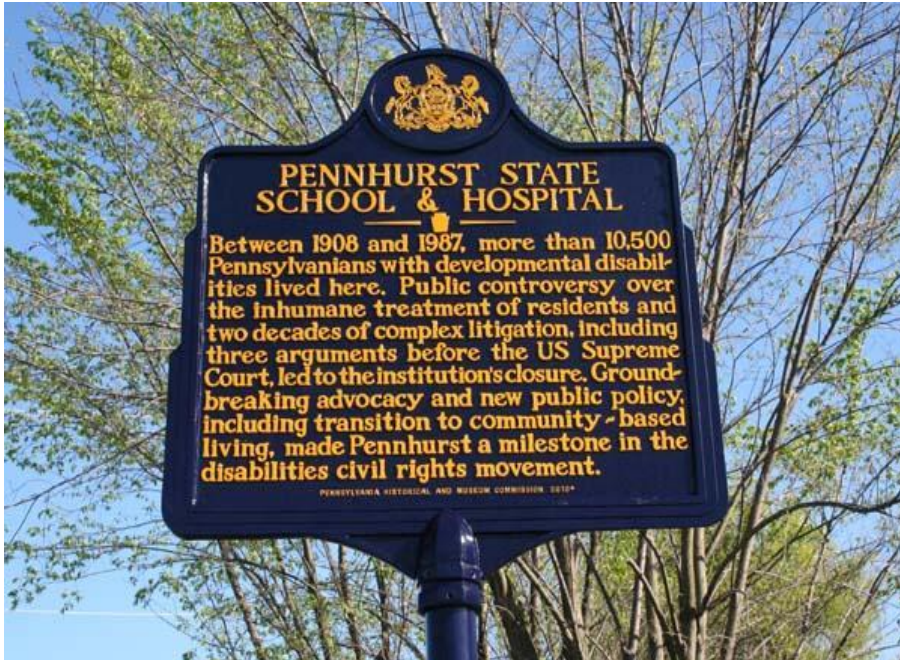
albaello@vfes.net

484.320.3241

Agenda

- History of Disability Services in PA
- What is Waiver Funding?
- What is Supports Coordination?
- How You Can Help

History of Disability Services in PA

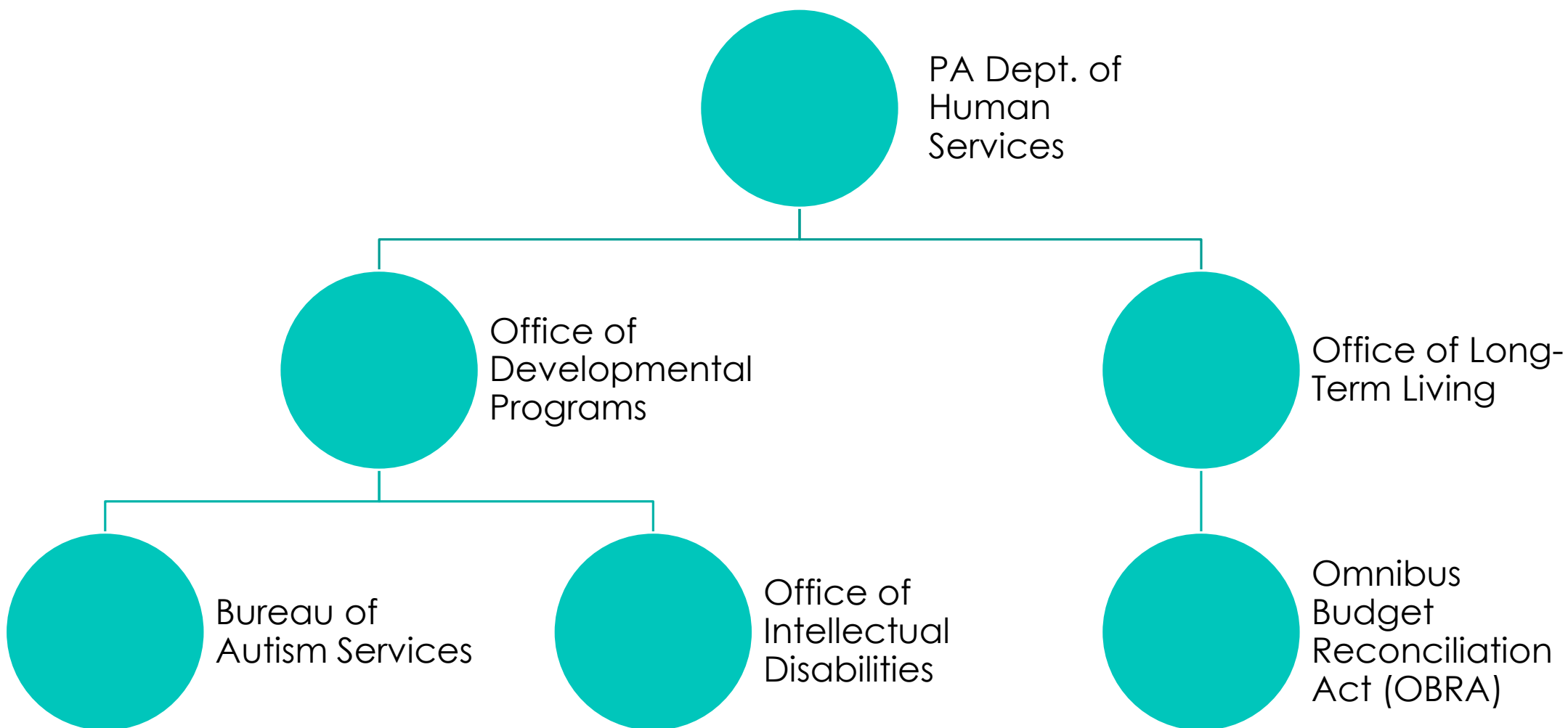


- State-operated institutions for people with developmental disabilities began opening in 1897 - Known as "Intermediate Care Facilities" (ICF).
- Institutions, such as Pennhurst, quickly became overcrowded, under-staffed, and under-funded, leading to neglect and abuse allegations.
- A 1968 exposé, "Suffer the Little Children", and a Supreme Court case, Halderman v. Pennhurst, led to the closure of Pennhurst and other state-run institutions.
- The closures led to the development of Home and Community Based Services (HCBS).

“Everyday Lives affirms our dedication to making it possible for everyone to live a life of meaning and joy.”

Nancy Thaler
Deputy Secretary, Office of Developmental Programs





What is Waiver Funding?

- With the closing of Intermediate Care Facilities (ICF), the state had to change the way it designated funding for individuals with developmental disabilities.
- According to DHS, “The name waiver comes from the fact that the federal government ‘waives’ medical assistance rules for institutional care in order for Pennsylvania to use the funds for HCBS.”
- Ultimately, a waiver is a funding source (using Medicaid dollars) that allows individuals to access HCBS that enable them to remain in a community setting rather than being admitted to an ICF.
- There are currently 11 waiver programs in the state – each has its own set of eligibility requirements and services.

Office of Long-Term Living (OLTL)

Omnibus Budget Reconciliation Act (OBRA)

Eligibility

- Age 18 or older
- Persons with developmental physical disabilities
- Disability results in at least 3 substantial functional limitations
- Disability manifested prior to age 22 and is expected to continue indefinitely
- Meet ICF level of care

Services

- Assistive Technology
- Community Integration Services
- Daily Living Services
- Environmental Adaptations
- Prevocational and Educational Services
- Respite Services
- Supported Employment Services
- Transportation

Bureau of Autism Services (BAS)

Adult Autism Waiver (AAW)

Eligibility

- Age 21 or older
- Diagnosed with Autism Spectrum Disorder (Autistic Disorder, Childhood Disintegrative Disorder, PDD-NOS, Asperger Syndrome, or Rett Syndrome)
- Meet ICF level of care

Services

- | | |
|------------------------------------|------------------------------|
| ○ Assistive Technology | ○ Nutritional Consultation |
| ○ Behavioral Health Services | ○ Occupational Therapy |
| ○ Community Inclusion | ○ Respite |
| ○ Community Transition Services | ○ Speech/Language Therapy |
| ○ Counseling | ○ Supported Employment |
| ○ Day and Residential Habilitation | ○ Supports Coordination |
| ○ Environmental Modifications | ○ Temporary Crisis Services |
| ○ Family Counseling and Training | ○ Transitional Work Services |
| ○ Job Assessment and Finding | |

Office of Intellectual Disabilities (OID)

P/FDS, Community Living, Consolidated Waivers

Eligibility

- No age limit
- Require an ICF/ID or ICF/ORC level of care
- Differing individual cost limits
 - P/FDS - \$33,000/yr (additional \$15,000/yr held for employment services)
 - Community Living - \$70,000/yr
 - Consolidated - unlimited

Services

- Assistive Technology
- Behavioral Support
- Community Participation Support
- Companion
- Employment Services
- Home and Vehicle Accessibility Adaptations
- In-Home and Community Support
- Respite
- Residential
- Shift Nursing
- Therapies
- Transportation

General Information

- To apply, individuals and their families should contact their local county office.
- Individuals can apply to multiple waiver programs, but can only have one waiver at a time.
- Currently, all waivers have a waitlist – ID waitlist is based on need; AAW waitlist is first come, first serve.
- More funding and waiver “slots” are available for ID waivers.

What is Supports Coordination?

Think – ‘Case Management’

By official definition, the purpose of Supports Coordination is to promote an individual's right to an Everyday Life, utilizing Person Centered planning and Self-Determination principles. Support Coordinators (SCs) must ensure accountability and promote quality in services and supports. SCs are responsible for locating, coordinating, and monitoring services for individuals with disabilities.

...but what does a Supports Coordinator do?

- Develop Individual Support Plans (ISPs) for all individuals
- ISPs outline all aspects of an individual's life, focusing on health and safety
- ISPs contain goals, called Outcomes
- Outcomes are tied to a waiver service (if the individual has been awarded a waiver)
- SCs help individuals and their families identify service providers for the services they need
- SCs then coordinate the start of services and monitor the quality of the services
- SCs also monitor the health and safety of individuals in all settings
- Note: AAW applicants do not get an SC until they are awarded a waiver; ID Waiver applicants get an SC from the time they are determined eligible

How does the state know what needs an individual has?

Prioritization of Urgency of Needs of Services
(PUNS)

****ID Waivers Only****

- When an individual begins working with an SC, they will complete a PUNS form.
- This form categorizes the level of need into one of three categories:
 - Planning (services needed in 2-5 years)
 - Critical (services needed within 2 years)
 - Emergency (services needed immediately)
- The document is updated, minimally, on an annual basis but can be updated at anytime if circumstances require a change of category.
- SCs are responsible for submitting a comment page alongside the PUNS to outline cost estimates to the state to help with budget planning.

How You Can Help



- Students can be any age to apply for ID waivers and should be encouraged to apply as early as possible. This will allow them to be assigned to an SC and to express any needs in the future.
- Applying early will not get them a waiver any sooner but it helps the state know the need for funding to be able to plan the budget to allow for funding for graduates.
- Encourage families to apply to both AAW and ID waivers.
- If a family has an SC, encourage them to invite their SC to IEP Meetings.
- This process is very confusing for families and they may need a lot of encouragement and reassurance as they go through it.



QUESTIONS?

Alexandra “Sascha” Baello

Director of Adult &
Recreation Services

albaello@vfes.net

484.320.3241

Resources

- PA Department of Human Services
 - dhs.pa.gov
- PA Office of Developmental Programs
 - myodp.org
- ASERT
 - paautism.org
- Preserve Pennhurst
 - preservepennhurst.org